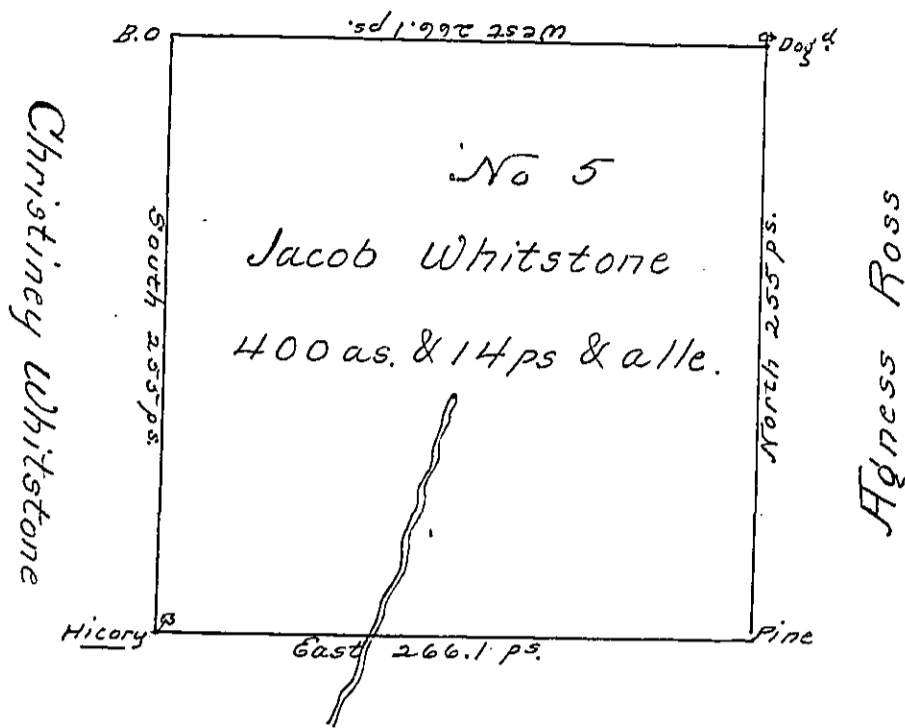


Margaret Mour



Alexander Henry

Situated on the waters of Cove Creek in
 Colrain Township Bedford County containing
 400 acres & 14 perches with the usual allowance
 of six percent for Road &c. Surveyed for Jacob
 Whitstone the 15th day Sept. 1794 ----- on warrant
 dated the 8th day May 1794

George Woods Junr 188

To Daniel Brodhead Esqr. S. G.

IN TESTIMONY that the above is a copy of the original remaining on file in
 the Department of Internal Affairs of Pennsylvania, made
 conformably to an Act of Assembly approved the 16th day of
 February, 1833, I have hereunto set my Hand and caused
 the Seal of said Department to be affixed at Harrisburg,
 this third day of February 1903

James W. Pitta
 Secretary of Internal Affairs.